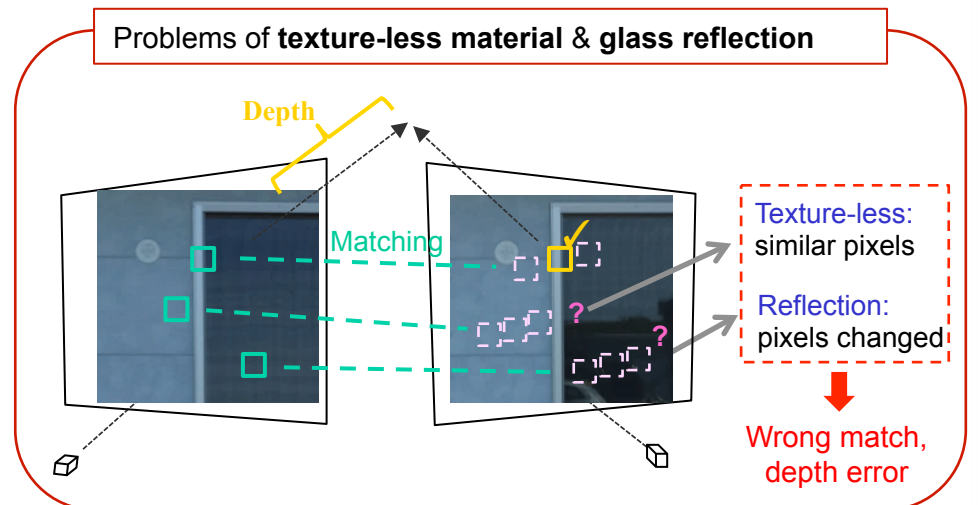
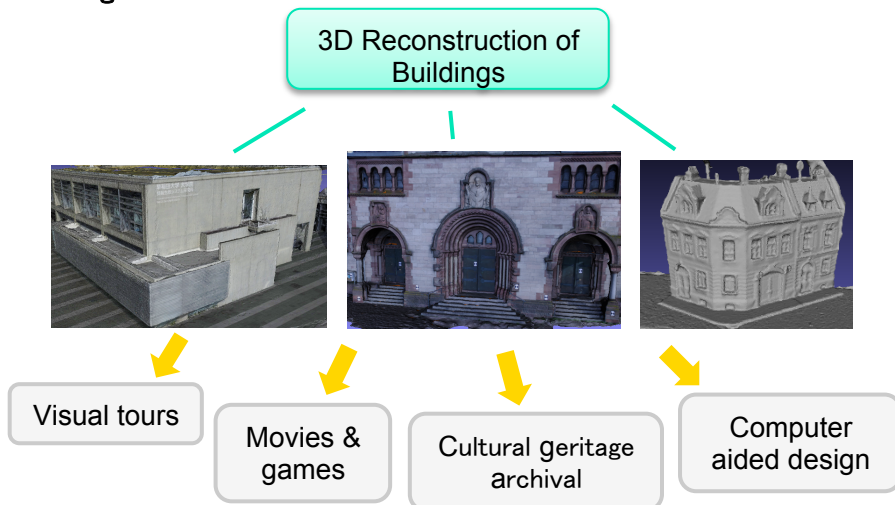


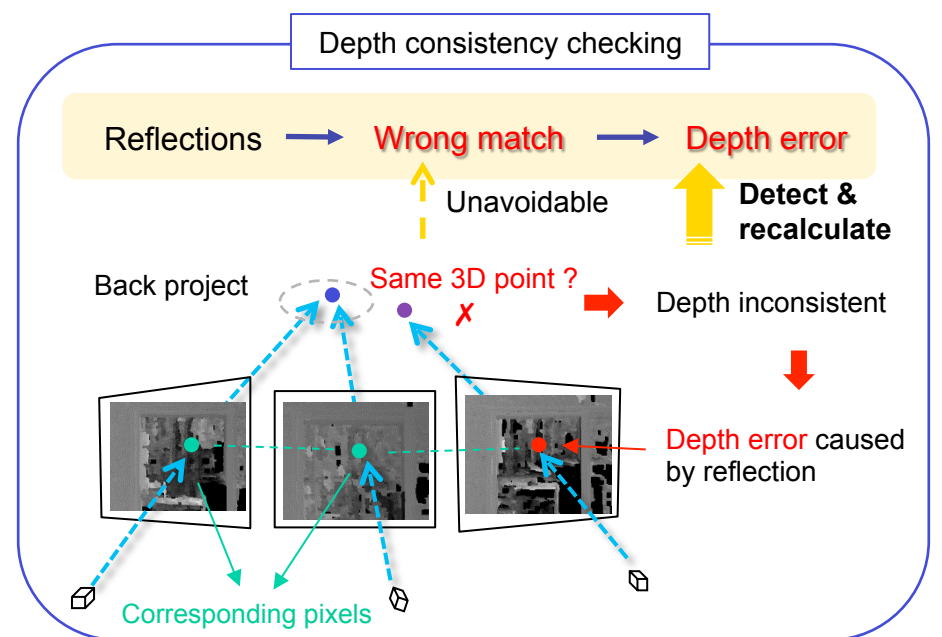
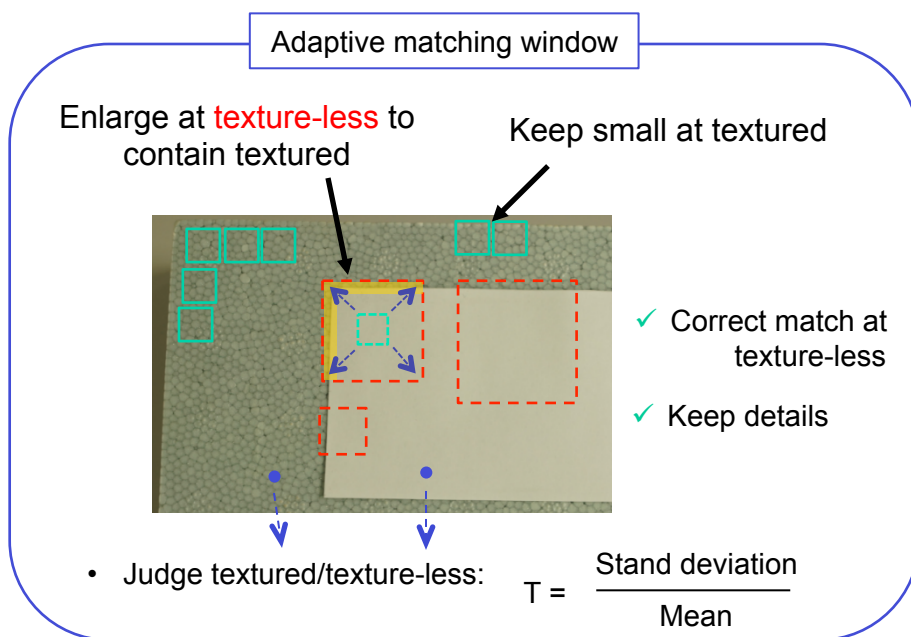
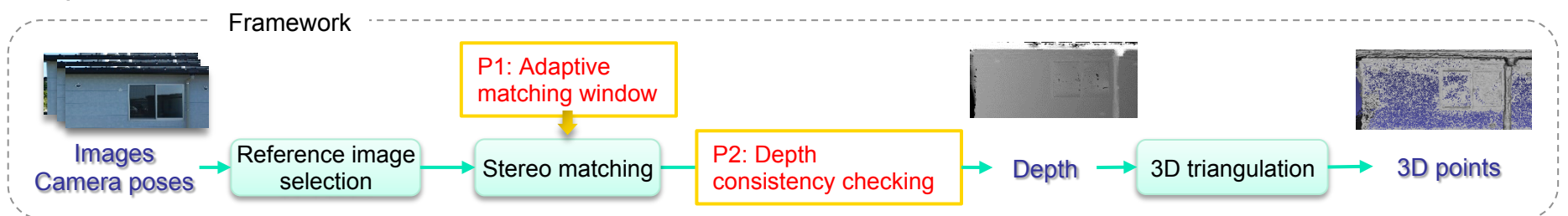
Adaptive Matching Window and Depth Consistency Checking Based High-quality 3D Reconstruction of Buildings from Drone Images

修士課程修了 劉胤楷

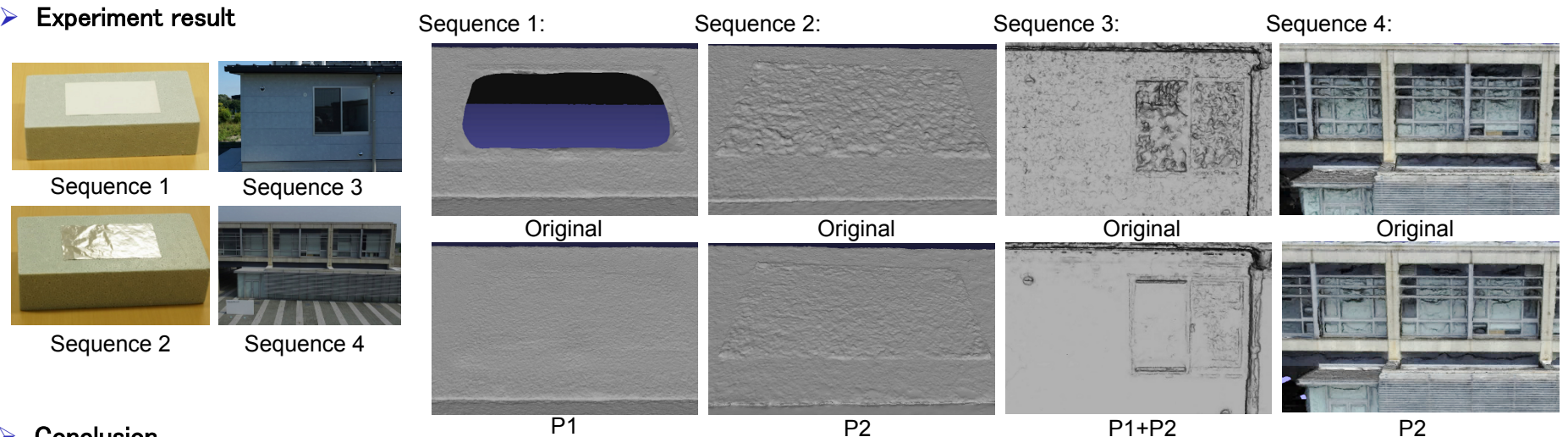
Background



Proposals



Experiment result



Conclusion

Proposed adaptive matching window and depth consistency checking to achieve higher reconstruction quality of buildings, get smoother at texture-less material while keeping detailed structures and smooth deformations caused by glass reflections.

